

DWG NO. 965-1227-201		SH. 1	1	
REVISIONS				
ZONE	REV	DESCRIPTION	DATE	APPROVED

NOTES: UNLESS OTHERWISE SPECIFIED,

- FOR TOP ASSEMBLY DRAWING SEE 965-1227.
- WEIGHT: 1.5 LBS MAX.
- FOR IDENTIFICATION PLATE SEE 402-6084.
- MAXIMUM POWER CONSUMPTION 7.5 WATTS (NO VOICES).

INTERFACE CONTROL DRAWING

TYPED NAMES CONSTITUTE APPROVAL. ACTUAL SIGNATURES ARE ON FILE AT HONEYWELL IN REDMOND WA.

This document is an unpublished work. Copyright 2001 Honeywell International Inc. All rights reserved

This document and all information and expression contained herein are the property of Honeywell International Inc., and is provided to the recipient in confidence on a "need to know" basis. Your use of this document is strictly limited to a legitimate business purpose requiring the information contained therein. Your use of this document constitutes acceptance of these terms.

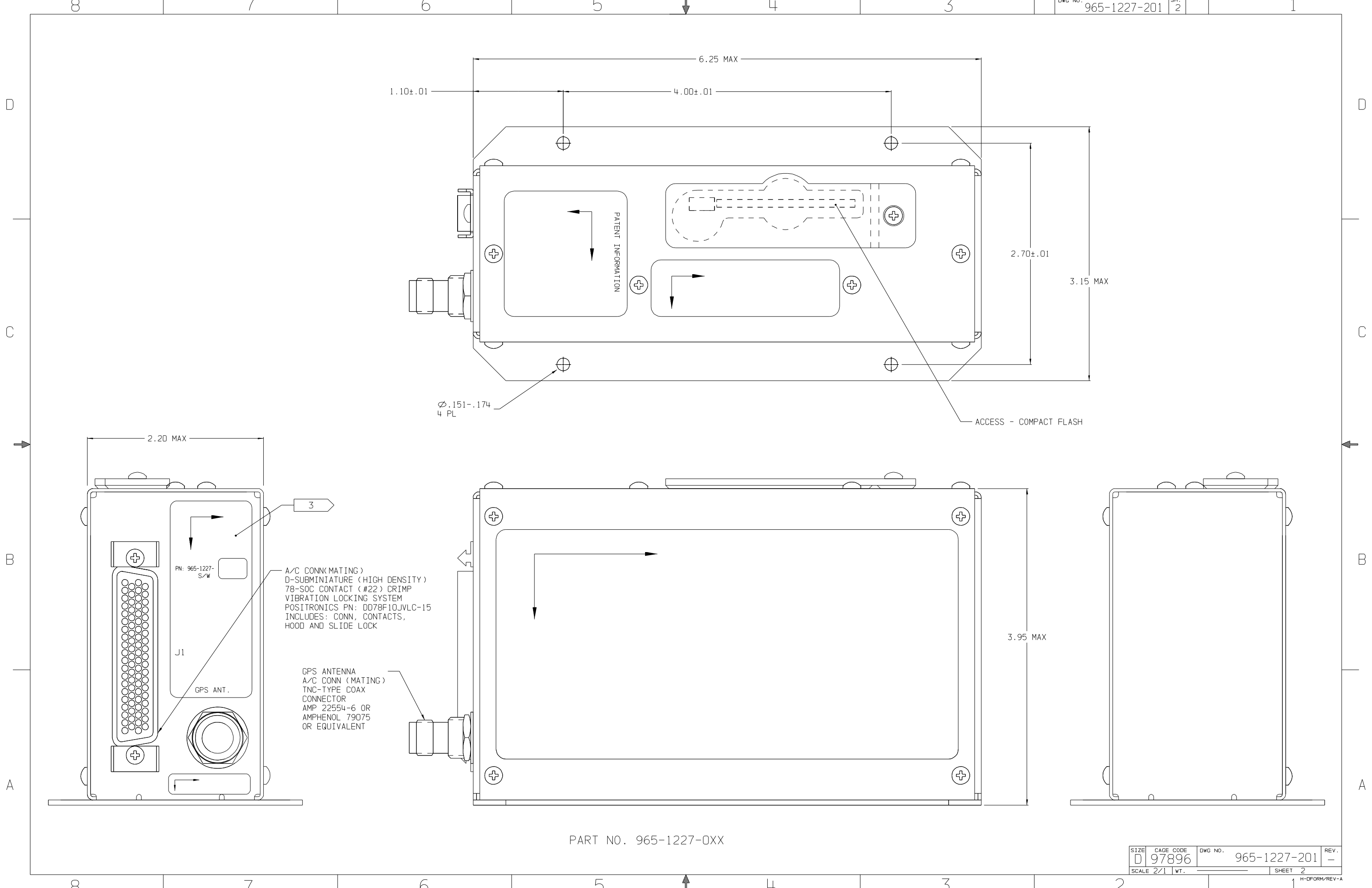
SHEET	1	2
REVISION STATUS OF SHEETS		

-201	-----	965-1227
DASH NO.	NEXT ASSY	USED ON
APPLICATION		

MATERIAL	UNLESS OTHERWISE SPECIFIED			CONTRACT NUMBER	
	ALL DIM. ARE IN INCHES	TOL	.XX ± --- .XXX ± ---- ANGLE ± --	DRAWN	K.LE 2001-6-8
	INTERPRET DRAWING PER DOD-STD-100.			CHECK	J.HARRENSTEIN 2001-6-8
	BREAK ALL SHARP EDGES			ENGR	J.HARRENSTEIN 2001-6-8
	SURFACE ROUGHNESS $\sqrt{\quad}$			MFG	M.SAVE 2001-6-8
PRECIOUS METAL INDICATOR CODE: A			GA	O.LOFSTROM 2001-6-8	
			APPD	-----	

Honeywell International Inc. Redmond Washington 98073-9701		Honeywell	
DWG TITLE			
OUTLINE - MKXXI EGPWC (WITH GPS)			
SIZE	CAGE CODE	DWG NO.	REV.
D	97896	965-1227-201	-
SCALE	2/1	WT.	2
SHEET		1 OF 2	

MKXXI EGPWS



PART NO. 965-1227-0XX

SIZE	CAGE CODE	DWG NO.	REV.
D	97896	965-1227-201	-
SCALE 2/1	WT.	SHEET 2	H-DFORM/REV-A