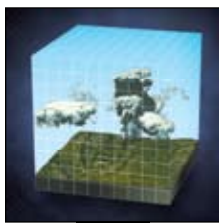
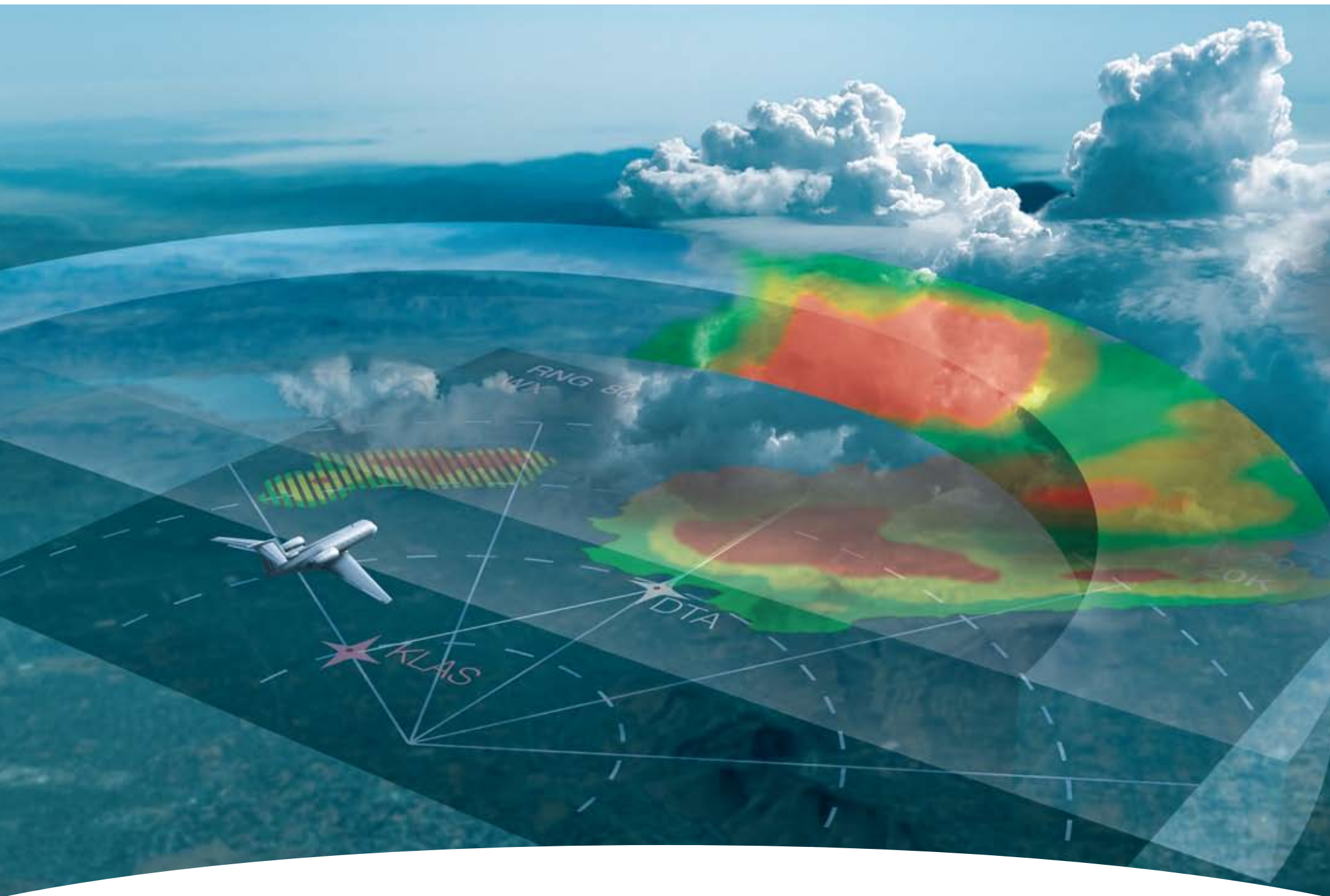


# conditions accurate



## Rerouting decisions are easier with IntuVue™ 3-D weather radar.

Honeywell's volumetric 3-D scanning and pulse compression technologies provide pilots a more complete view of the weather than radar systems based on outdated, point-and-shoot technology. Weather detection is now fully automated, reducing pilot workload. Hazard assessments based on flight path data are continually updated, allowing pilots to make safer, more informed route decisions sooner and with more precision. Proven in commercial applications, no other onboard weather radar system provides a clearer more accurate view of weather. **Engage Safety.**

## Honeywell

To learn how Honeywell can help simplify weather routing decisions, visit our website at [www.honeywell.com/IntuVue](http://www.honeywell.com/IntuVue)

©2008 Honeywell International Inc.